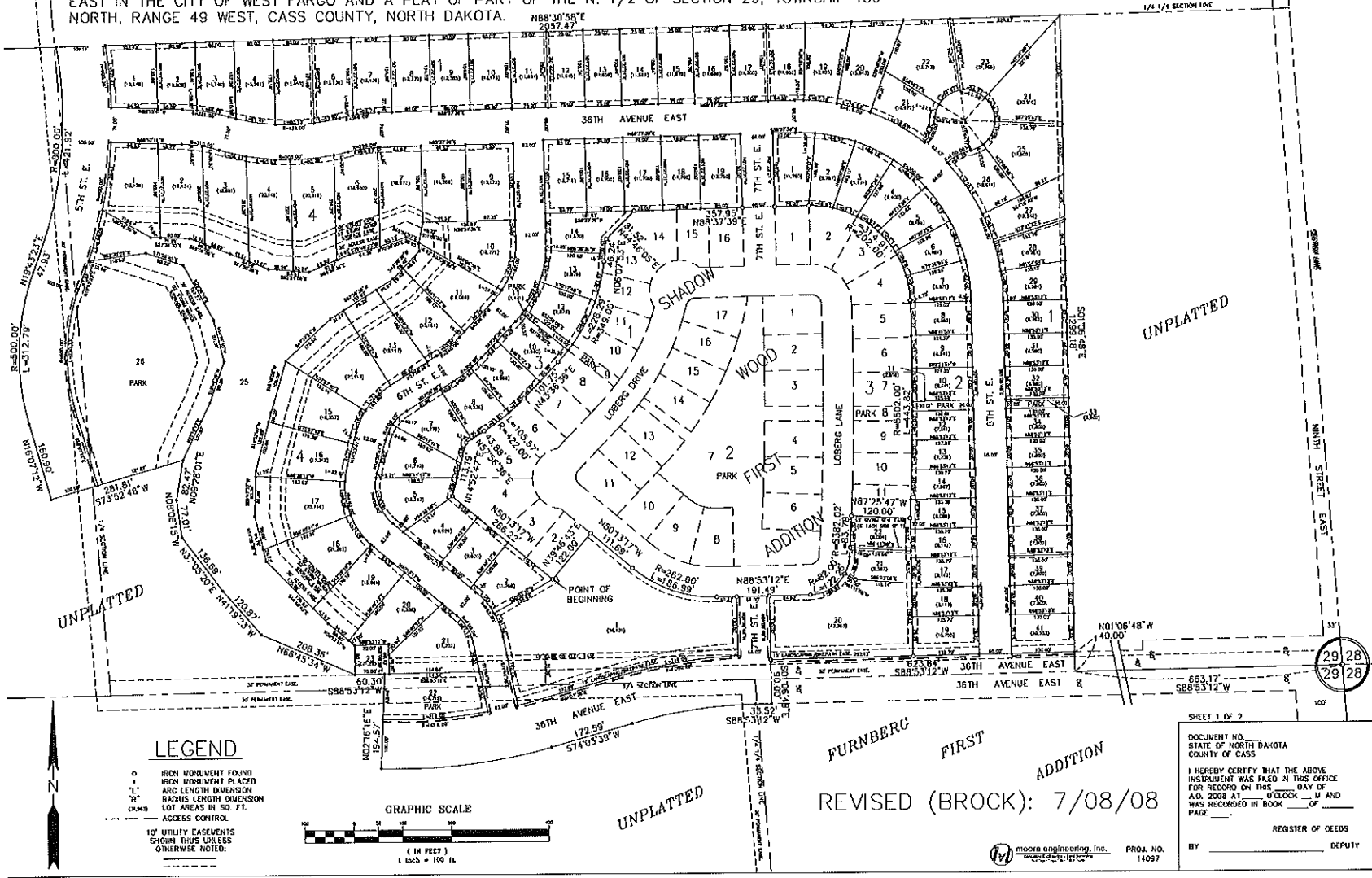
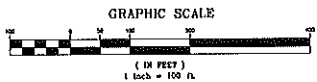


PLAT OF SHADOW WOOD SECOND ADDITION TO THE CITY OF WEST FARGO, A REPLAT OF LOT 1, BLOCK 1, LOTS 12, 13 AND 14, BLOCK 3, PART OF 7TH STREET EAST AND PART OF 36TH AVENUE EAST IN THE CITY OF WEST FARGO AND A PLAT OF PART OF THE N. 1/2 OF SECTION 29, TOWNSHIP 139 NORTH, RANGE 49 WEST, CASS COUNTY, NORTH DAKOTA.



LEGEND

- IRON MONUMENT FOUND
- IRON MONUMENT PLACED
- "L" ARC LENGTH DIMENSION
- "R" RADIUS LENGTH DIMENSION
- LOT AREAS IN SQ. FT.
- ACCESS CONTROL
- 10' UTILITY EASEMENTS SHOWN THUS UNLESS OTHERWISE NOTED.



REVISD (BROCK): 7/08/08

moore engineering, Inc. PROJ. NO. 14097

SHEET 1 OF 2

DOCUMENT NO. _____
 STATE OF NORTH DAKOTA
 COUNTY OF CASS
 I HEREBY CERTIFY THAT THE ABOVE INSTRUMENT WAS FILED IN THIS OFFICE FOR RECORD ON THIS _____ DAY OF A.D. 2008 AT _____ O'CLOCK _____ M AND WAS RECORDED IN BOOK _____ PAGE _____

REGISTER OF DEEDS
 BY _____ DEPUTY

29 28
 29 28